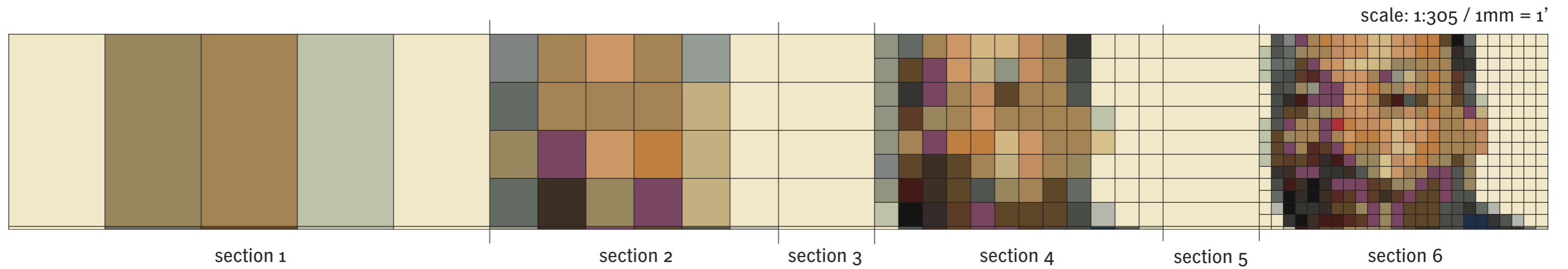


# tank # 105 (side - Martin Luther King)



tank # 105:

height: 48'

diameter: 120'

circumference: 376,9911'

pixelgrid:

section 1: 5 columns each 24,36'

section 2: pixelgrid 11,6' x 11,6'

section 3: 1 column 23,2'

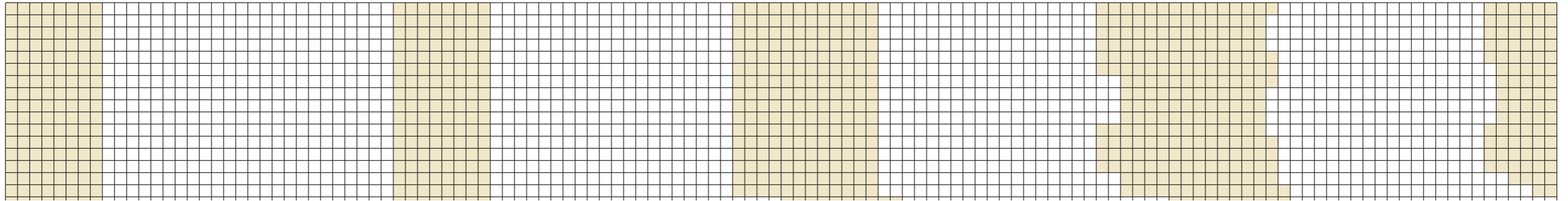
section 4: pixelgrid 5,8' x 5,8'

section 5: 1 column 23,2'

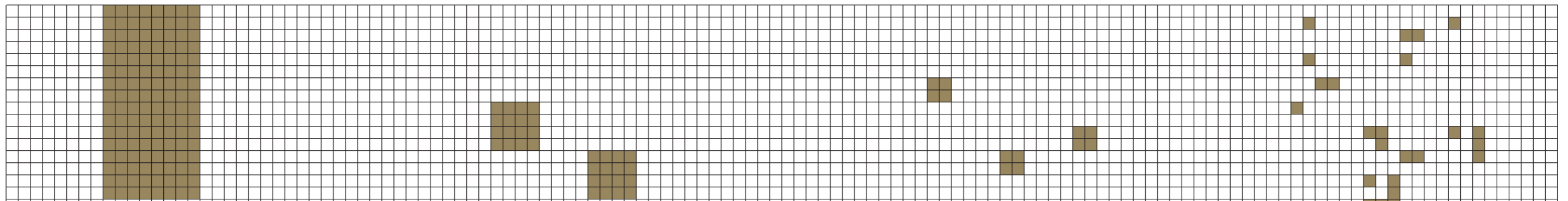
section 6 : pixelgrid 2,9' x 2,9'

section 5 & 6 detail (without grid / 350%)

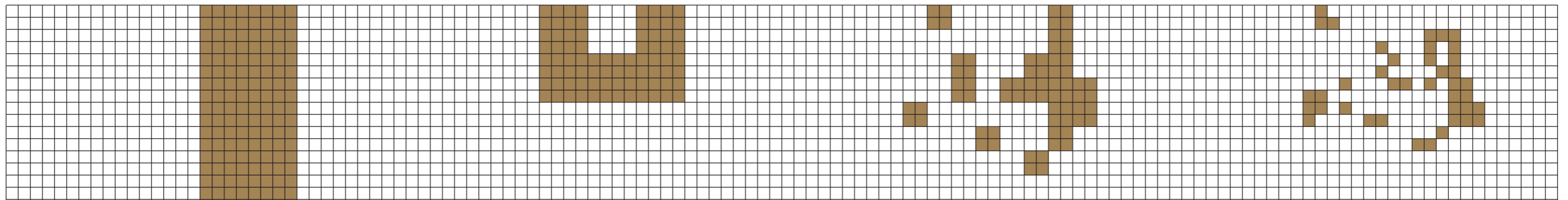
# tank # 105 (side)



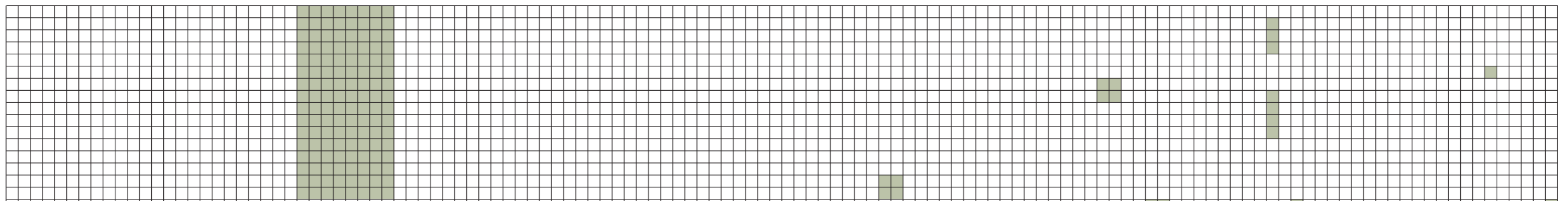
DC3501



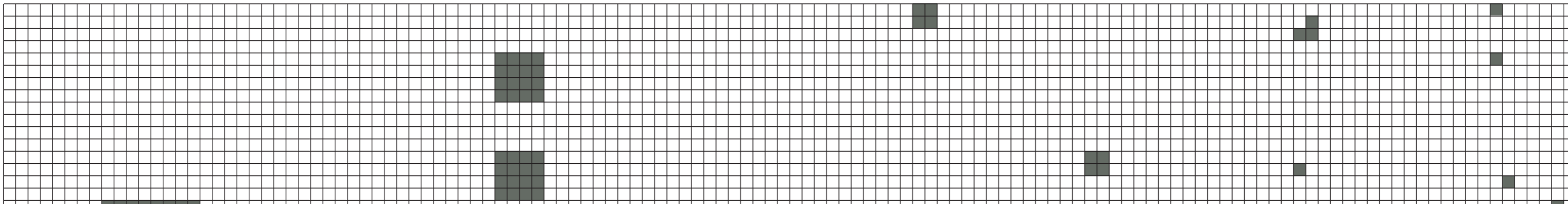
DC5300



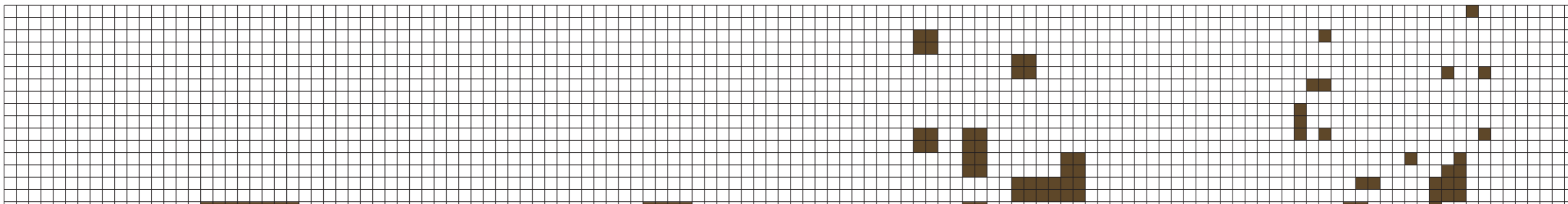
DC1534



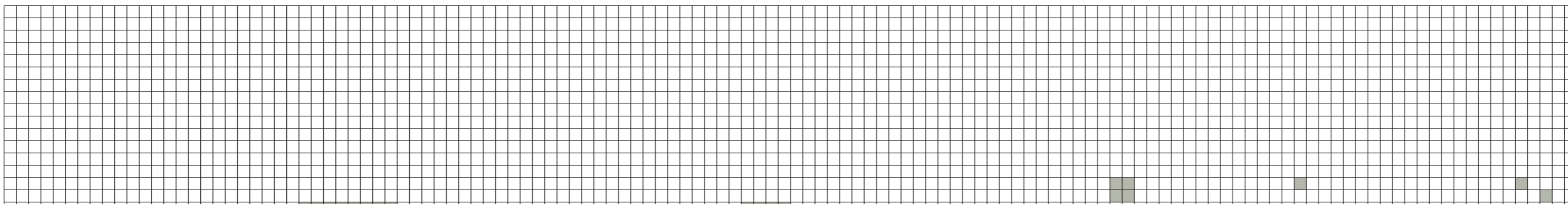
DC2531



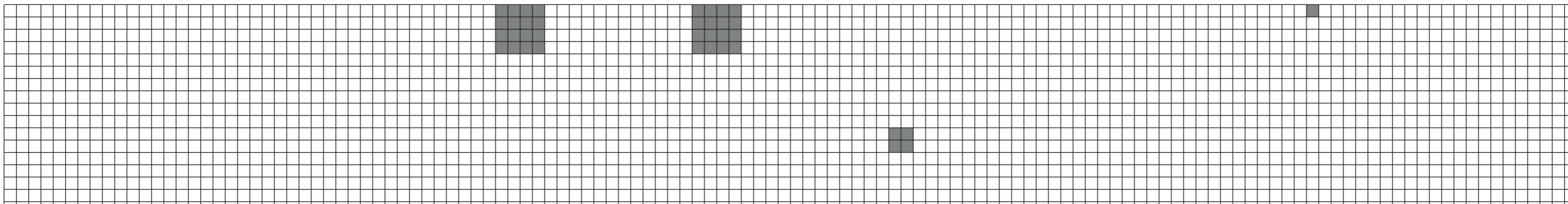
DC2904



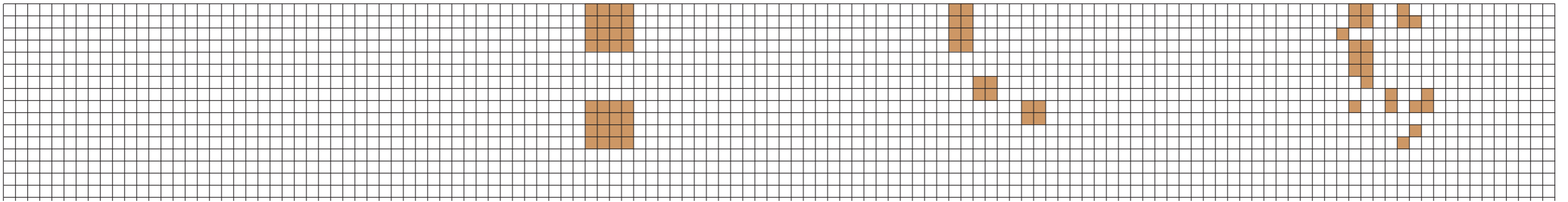
DC1400



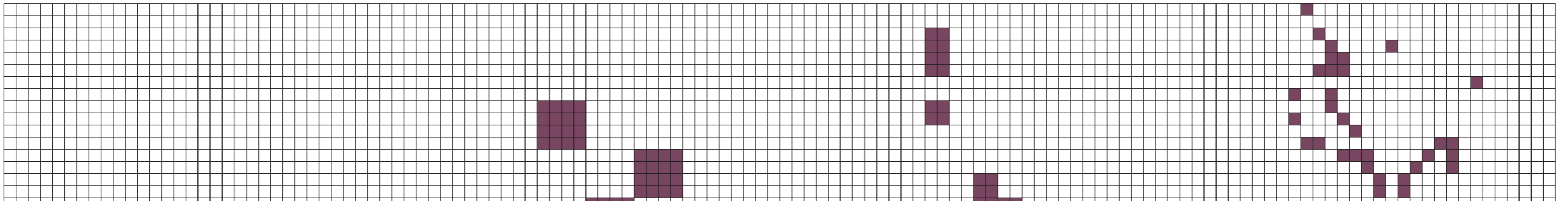
DC3201



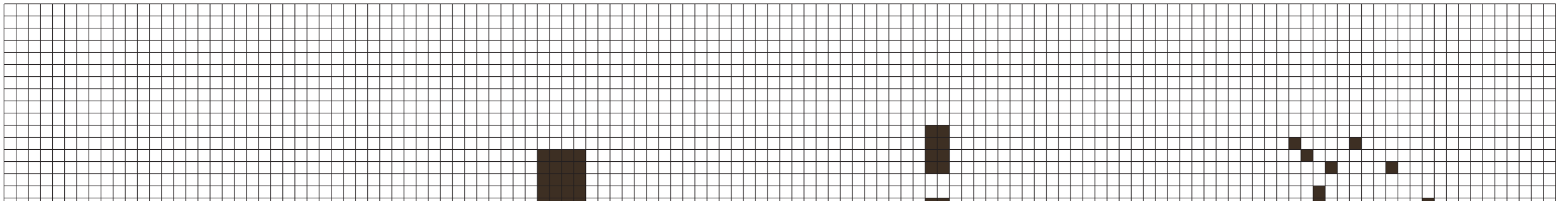
DC2973



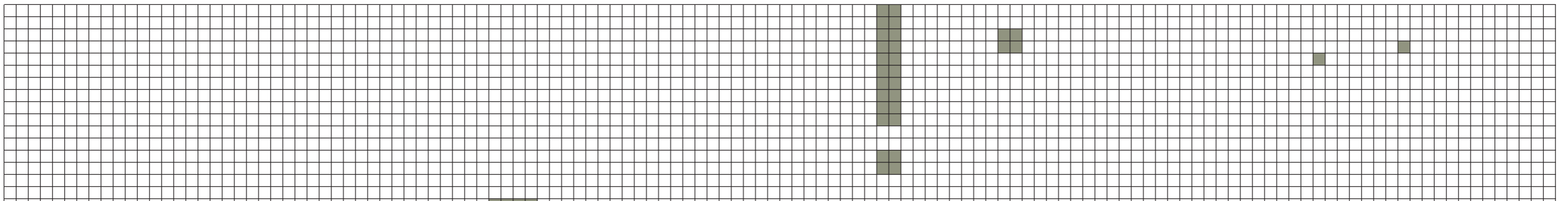
DC1642



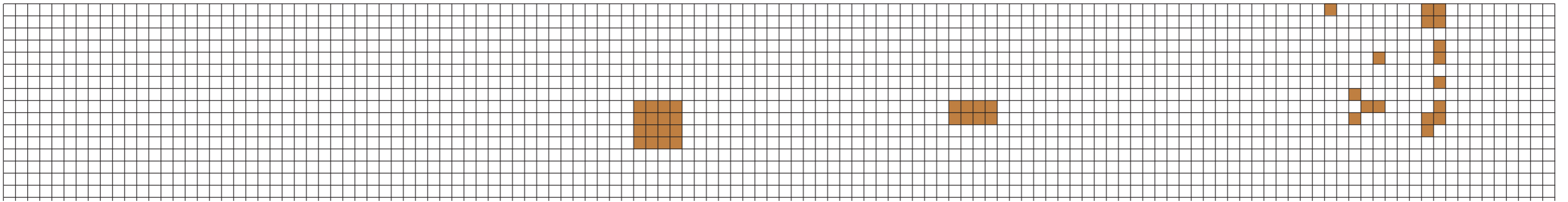
DC9600



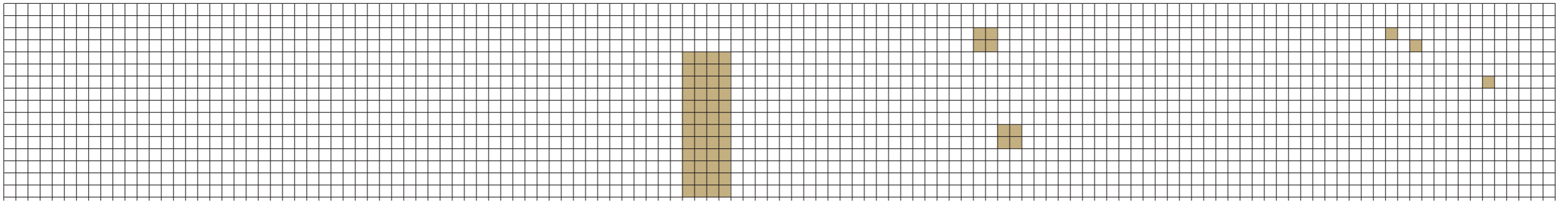
DC7470



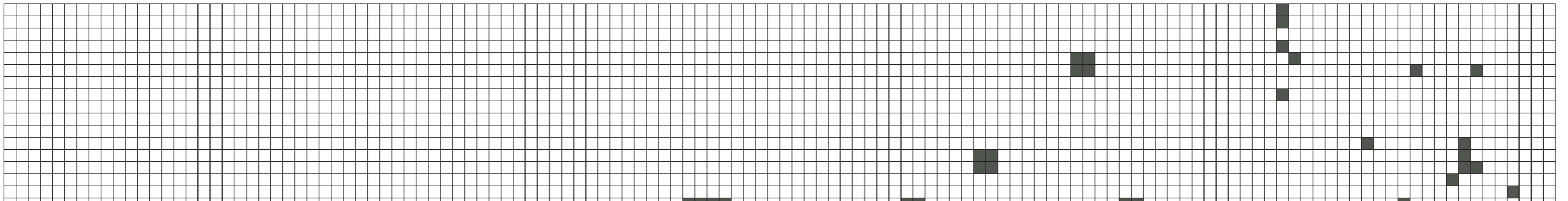
DC2534



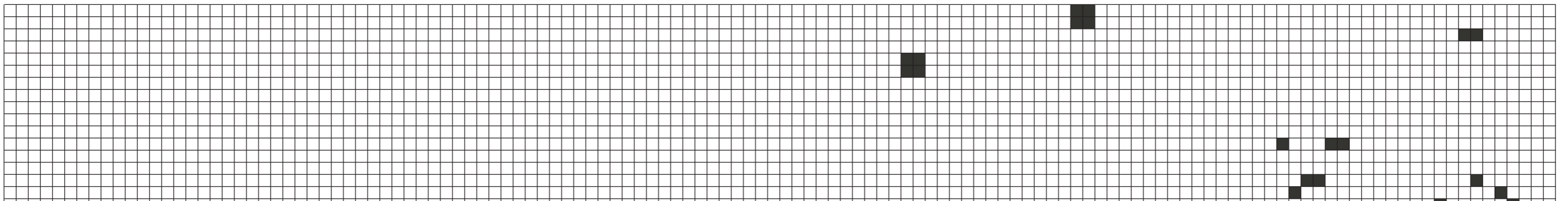
DC8800



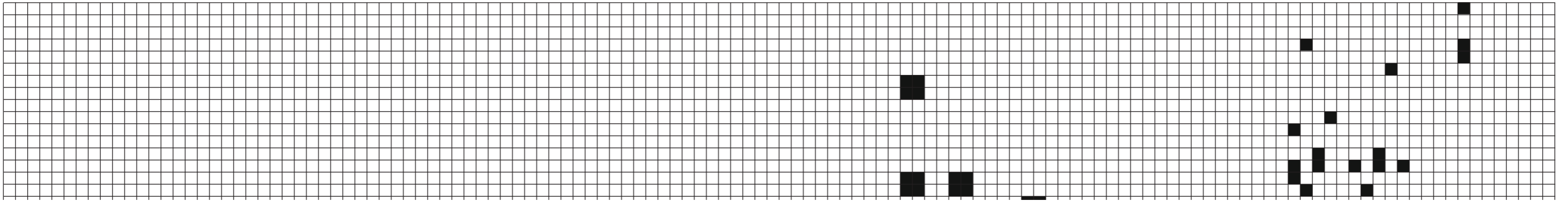
DC1810



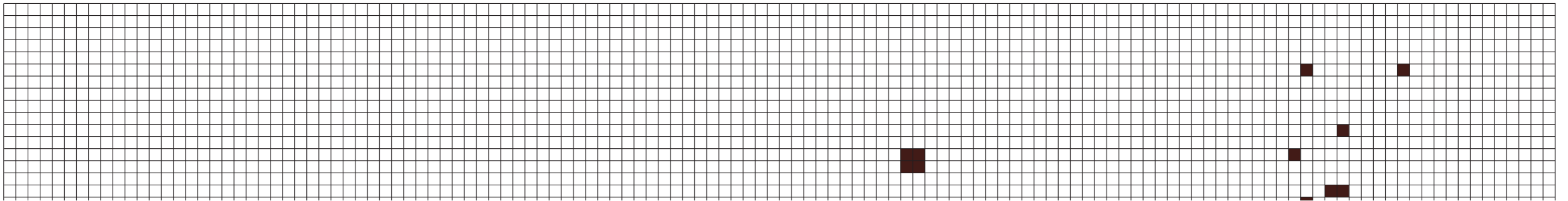
DC6110



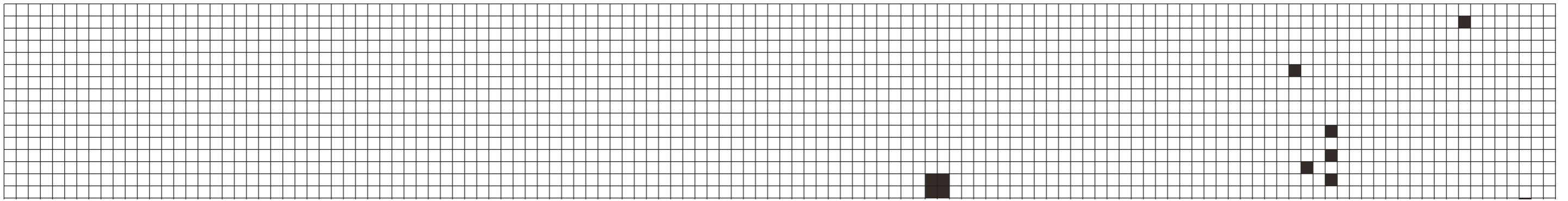
DC7450



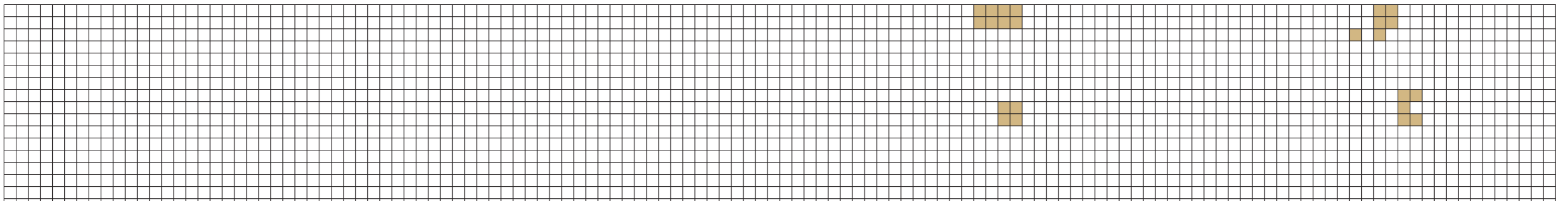
DC9990



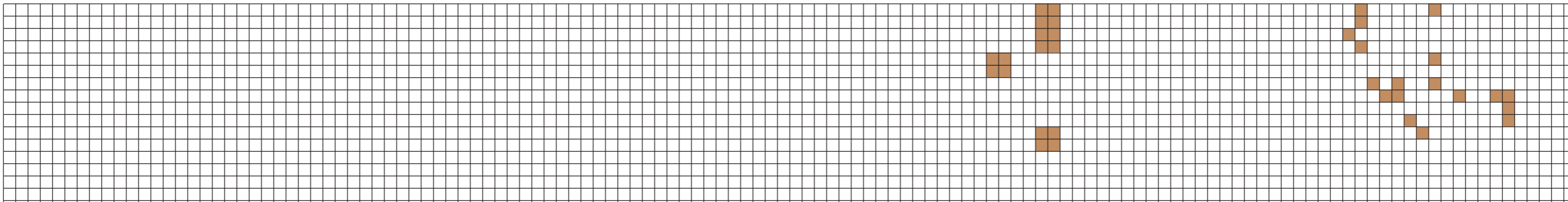
DC7835



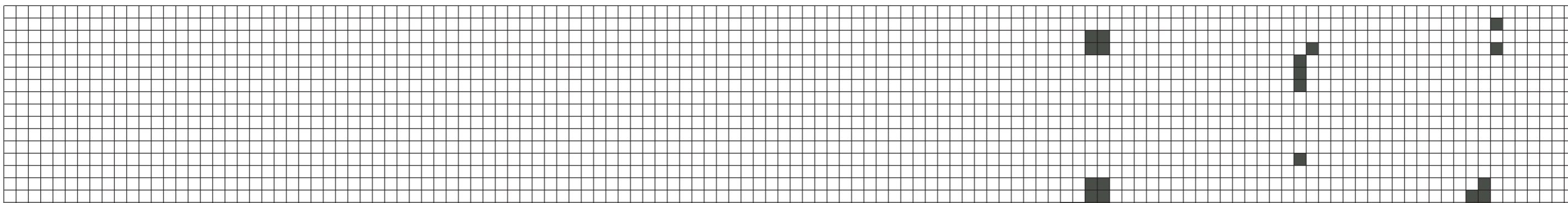
DC7460



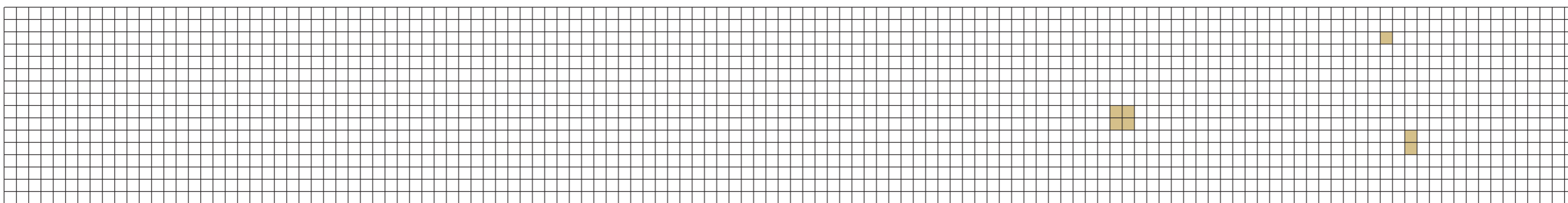
DC1046



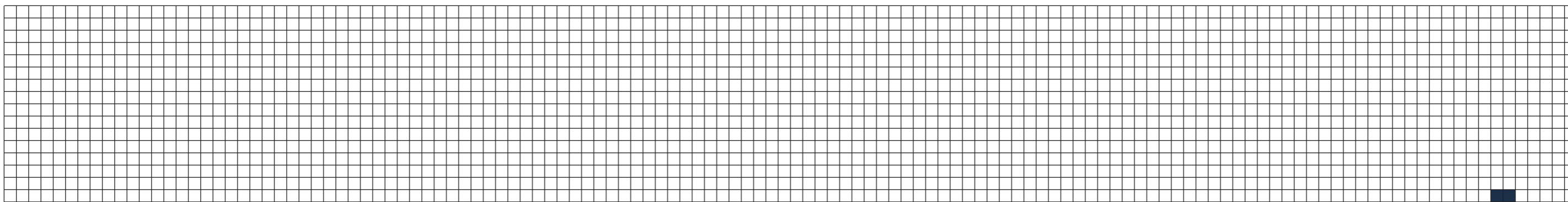
DC1442



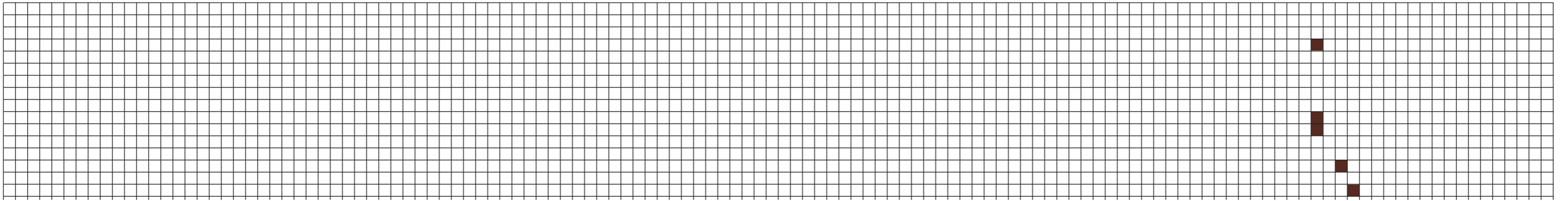
DC2100



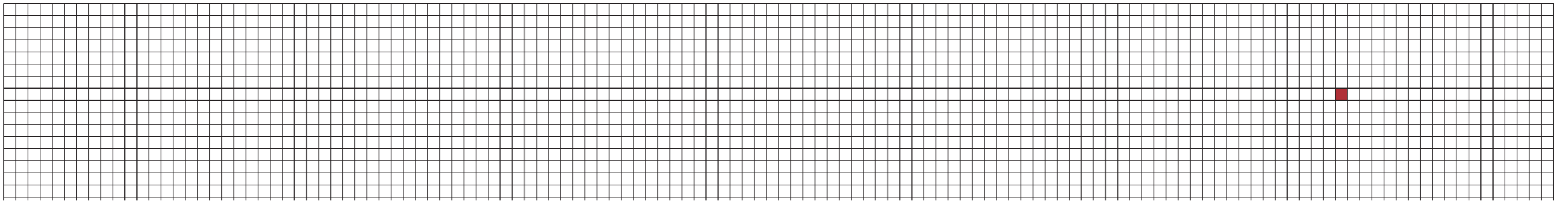
DC1200



DC2850



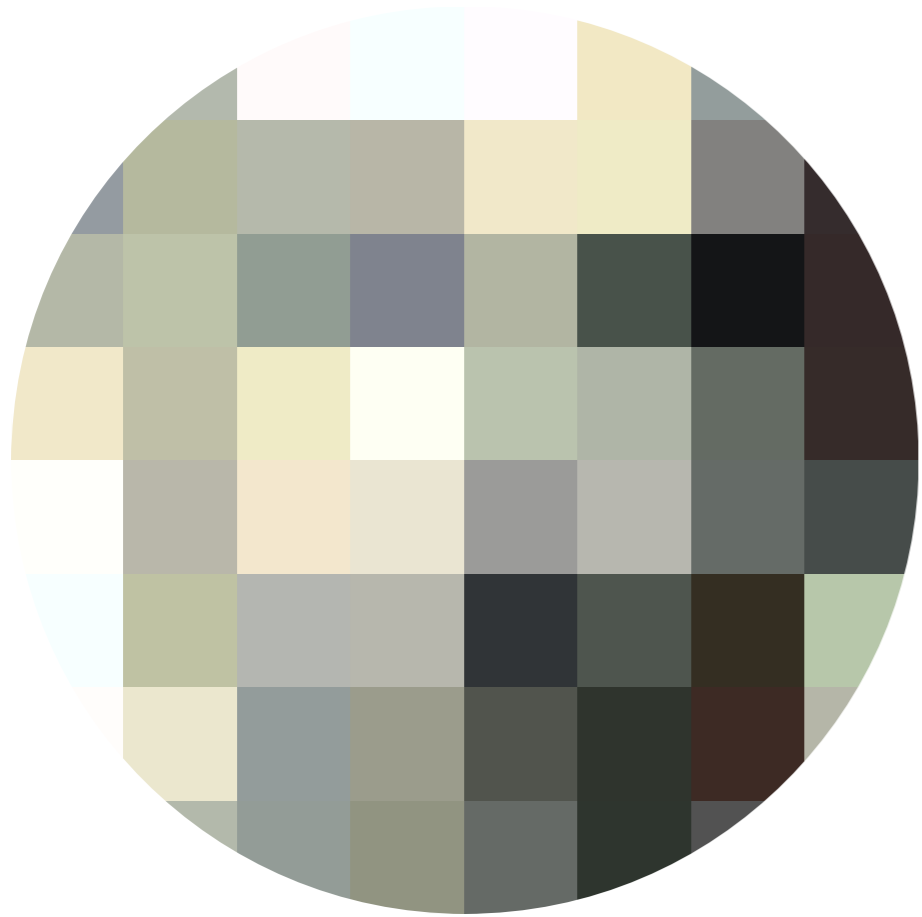
DC7821



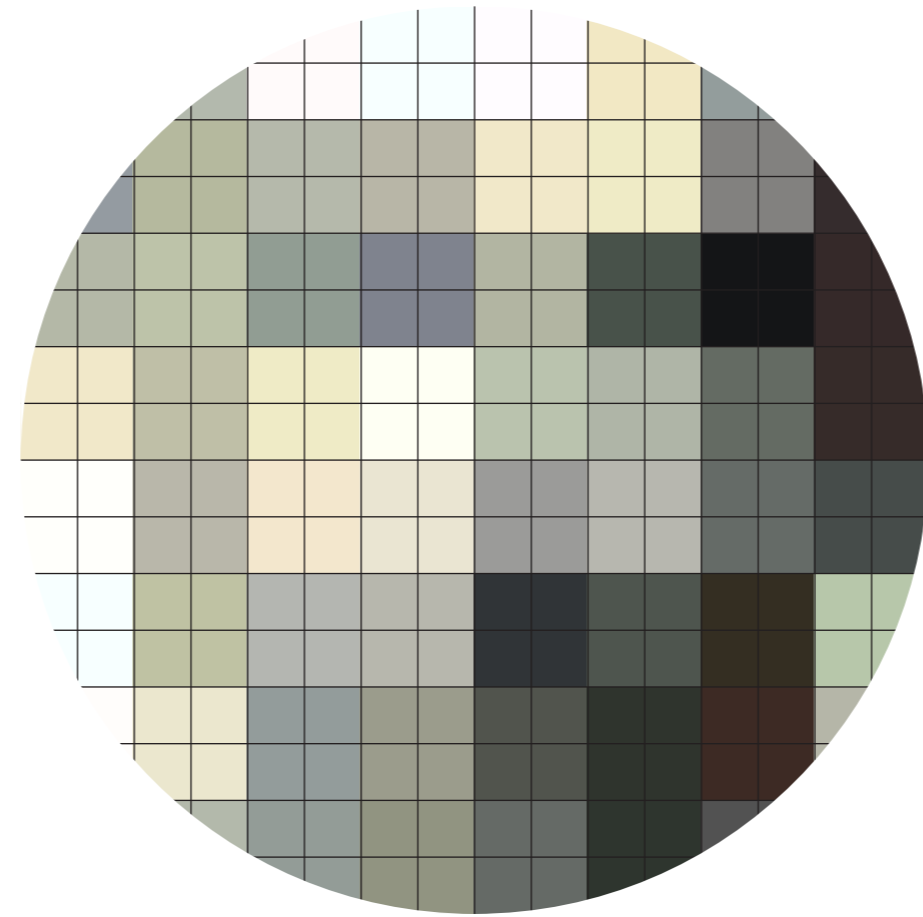
DC7100



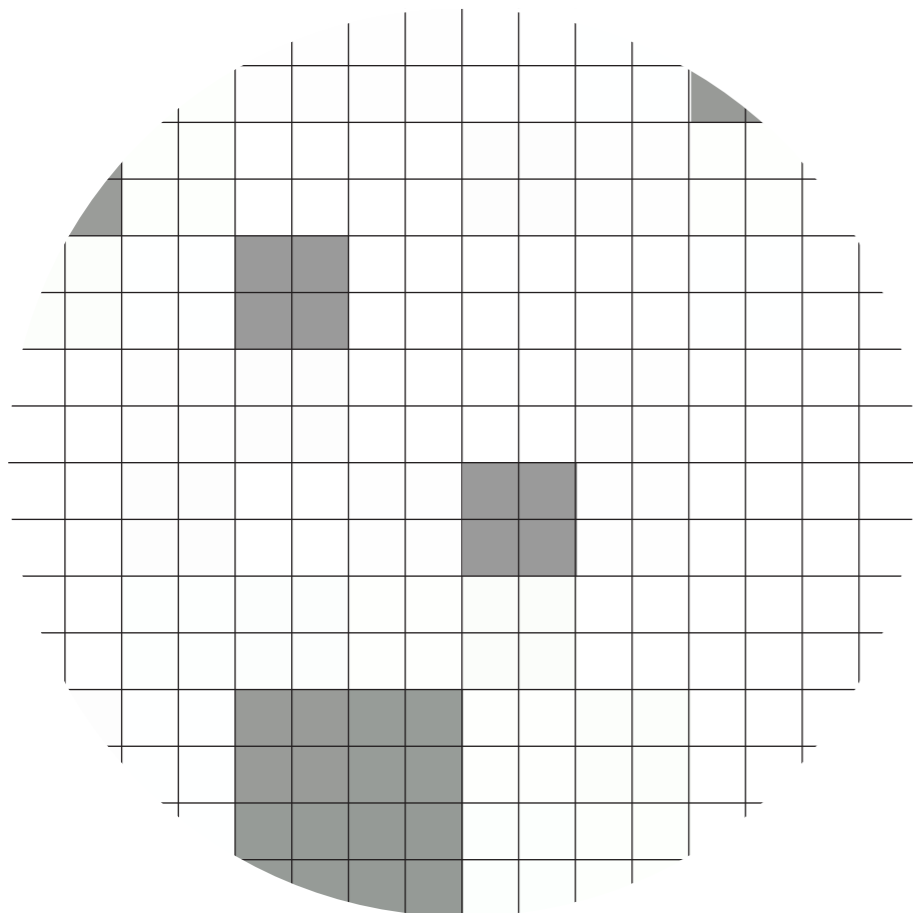
tank # 105 (top - E.B. White)



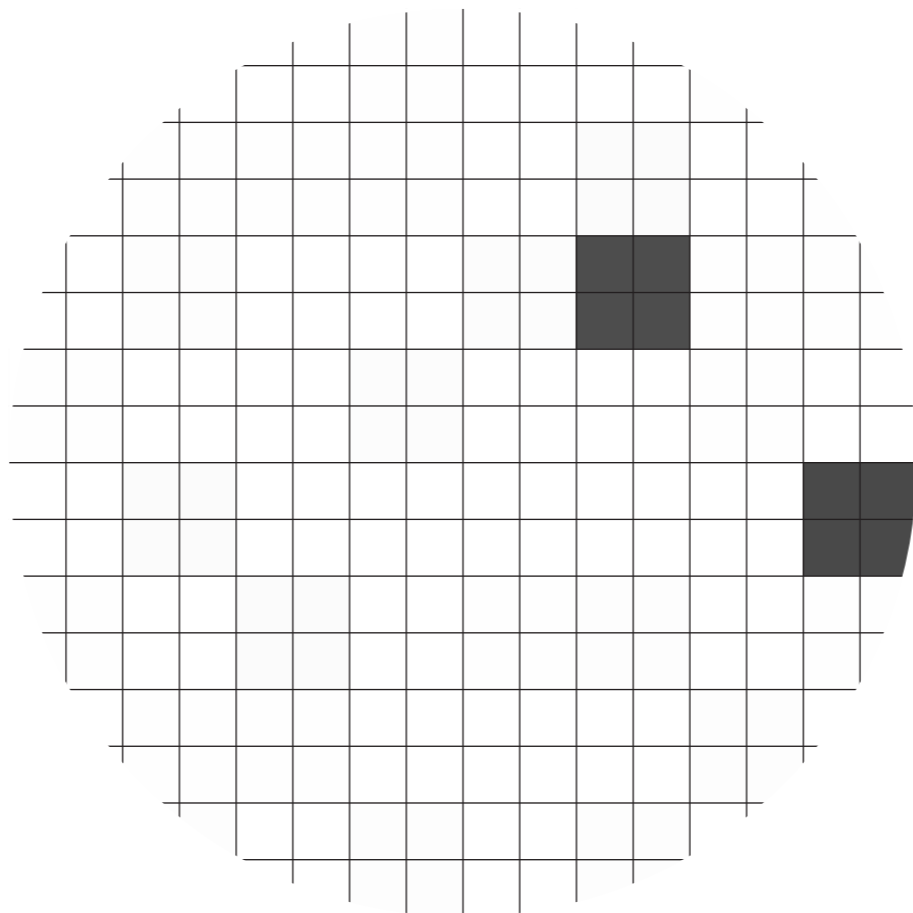
scale: 1:305 / 1mm = 1'



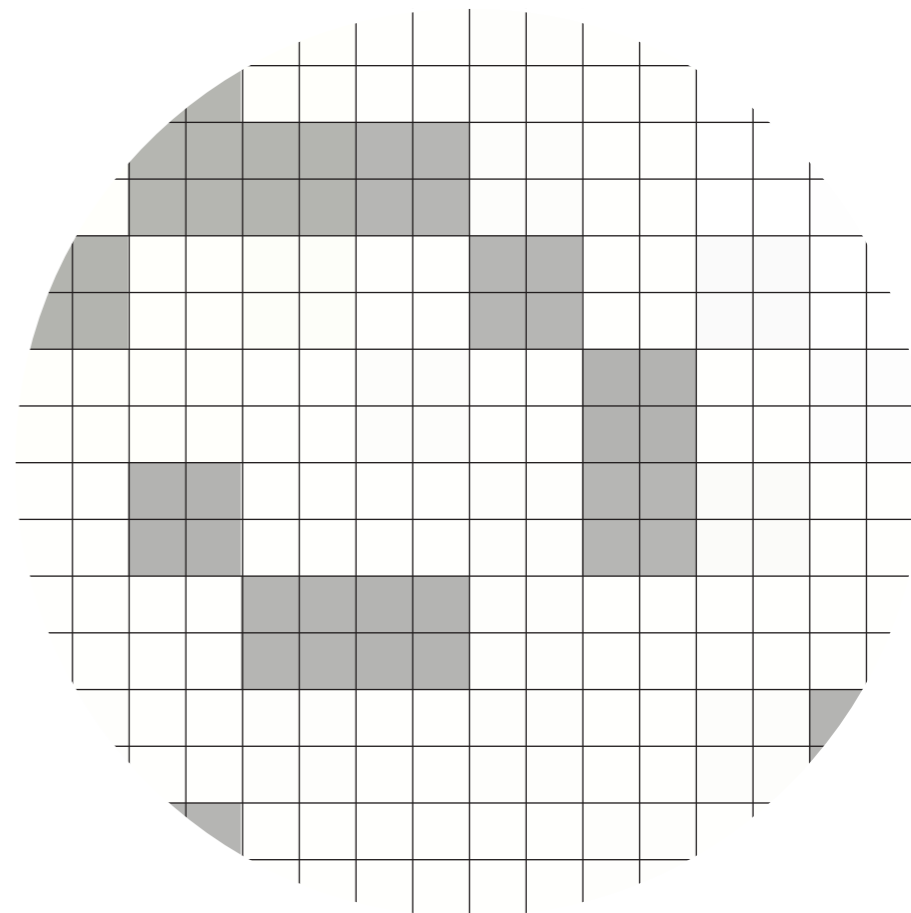
dimensions  
diameter: 120'  
pixelgrid: 7,5' x 7,5'



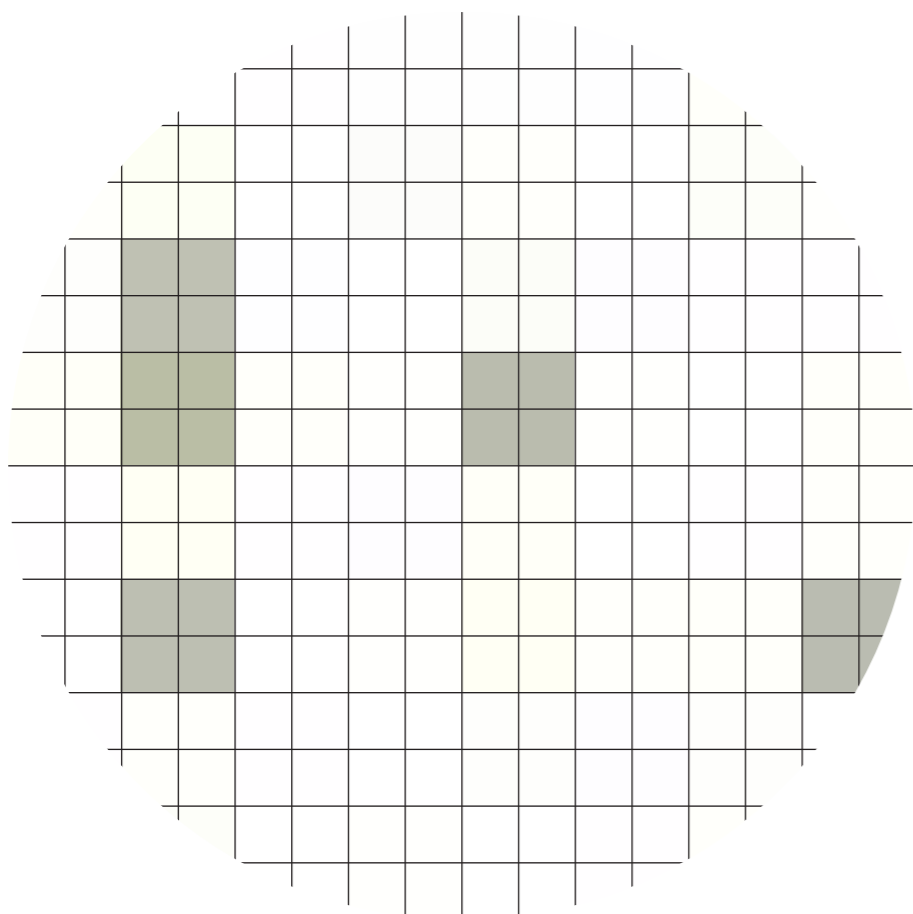
DC2000



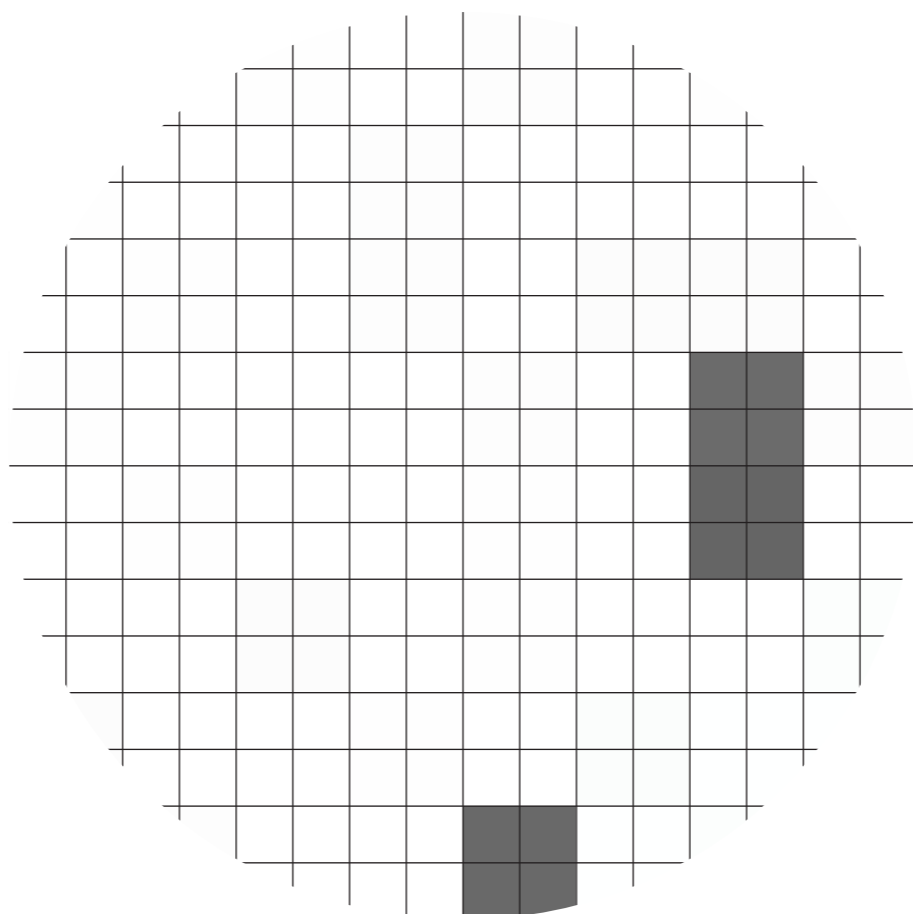
DC2100



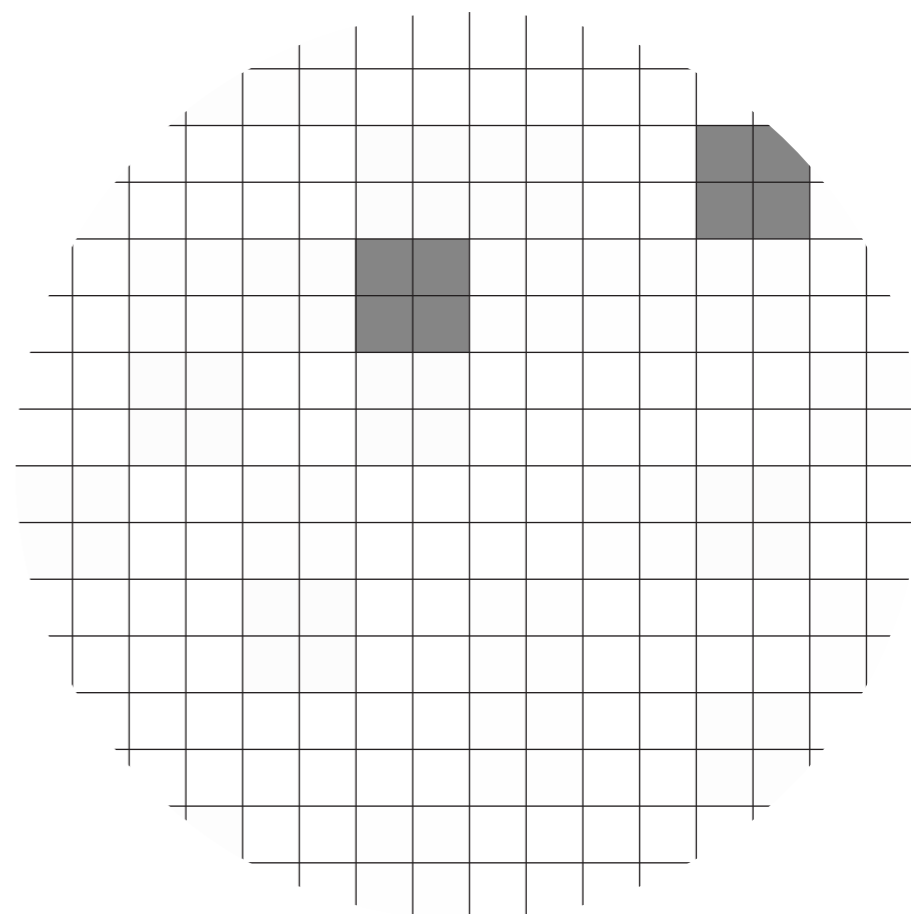
DC2301



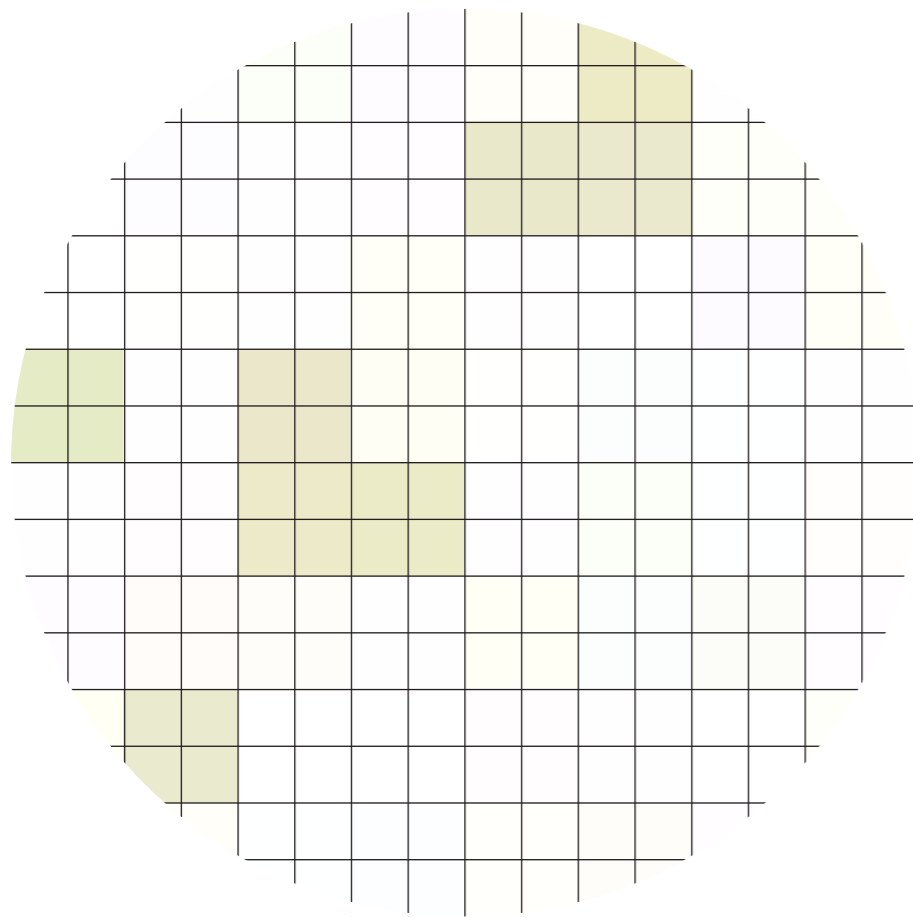
DC2531



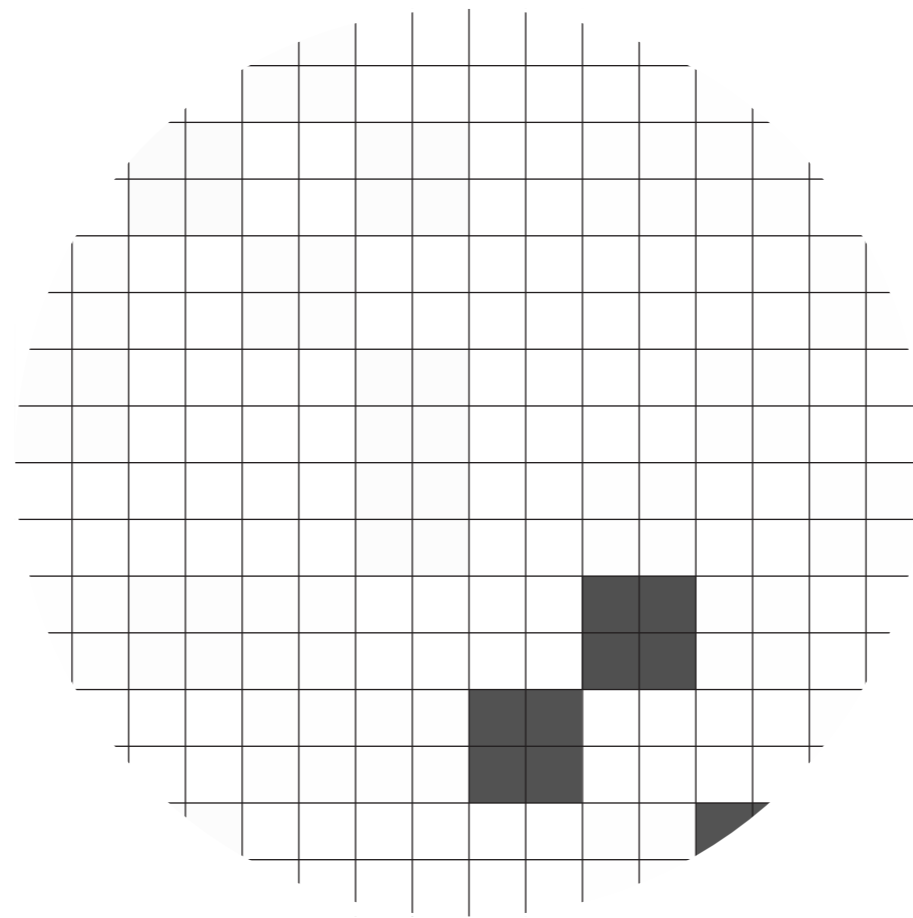
DC2904



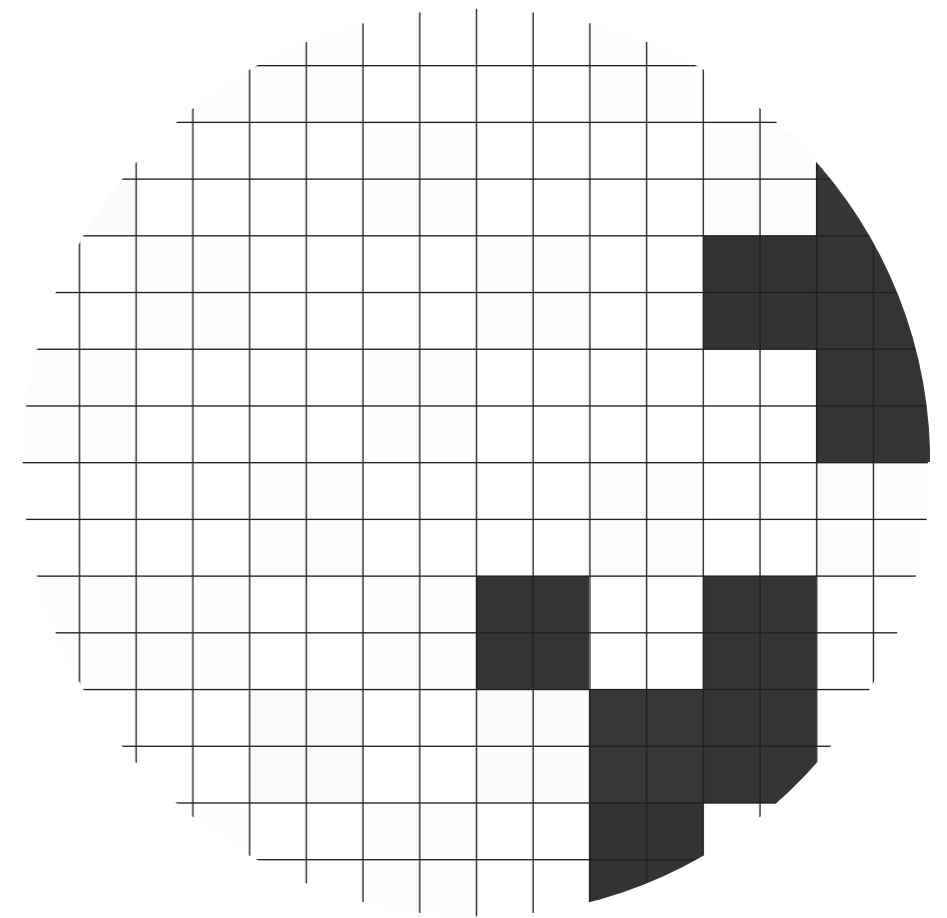
DC2973



DC3501



DC6110



DC7450

printed color may vary from paintcolor

#105 MLK/EBW  
Holger Friese, 2008